



# THE HARVARD CLUB of SOUTHERN CALIFORNIA

NUMBER 4

WWW.HARVARD-LA.ORG

(877) 99 HARVARD

APRIL 2012

## *Upcoming Events*

### ***Sunday, April 1, 2012 @ 3PM***

#### ***LGBT Performance of The Color Purple***

**Location:** Celebration Theatre (Los Angeles)  
**Cost:** \$32 per person  
**Contact :** Cameron Faber, cfaber@lagaycenter.org

### ***Saturday, April 7, 2012 @ 11AM***

#### ***Docent-Led Tour of East Asian Art Galleries***

**Location:** LA County Museum of Art (Los Angeles)  
**Cost:** \$15, members; \$20, non-members  
**Contact :** Thuy Le, 310-591-4384 or  
Grace Jeon, 626-862-0538

### ***Wednesday, April 18, 2012 @ 7PM***

#### ***LGBT Wine Tasting at Silverlake Wine***

**Location:** Silverlake Wine (Los Angeles)  
**Cost:** \$25 per person  
**Contact :** Kevin Kassover, kassover@alumni.upenn.edu

### ***Sunday, April 22, 2012 @ 6:30PM***

#### ***Sir Neville Marriner and The Colburn Orchestra***

**Location:** Walt Disney Concert Hall (Los Angeles)  
**Cost:** \$35, members; \$40, non-members  
**Contact :** Albert Chang, AlbertChang@charter.net

### ***Saturday, April 28, 2012 @ 12 Noon***

#### ***Fifth Radcliffe College Alumnae Luncheon***

**Location:** The home of Isabelle Fox (Sherman Oaks)  
**Cost:** \$30.00 per person  
**Contact:** Isabelle Fox, foxbthere@aol.com

### ***Saturday, April 28, 2012 @ 1:30 PM***

#### ***Exclusive Skirball Exhibition: "Women Hold Up Half the Sky"***

**Location:** Skirball Cultural Center (Los Angeles)  
**Cost:** \$7.00, tour; \$23.00, optional lunch  
**Contact:** Albert Chang, AlbertChang@charter.net

### ***Sunday, April 29, 2012 @ 6PM***

#### ***The 2012 Harvard Club Annual Dinner & Awards***

**Location:** USC Town & Gown (Los Angeles)  
**Cost:** \$75/members & guests; \$80/non-members;  
\$60/Recent Grads (Classes of '02 - '11)  
**Contact:** Madeleine Mejia,  
Madeleine\_Mejia@post.harvard.edu

Please visit [www.Harvard-LA.org](http://www.Harvard-LA.org) for a complete list of upcoming events and to register.



## **Club Encourages Volunteerism During April Month of Public Service**

The Harvard Club encourages all alumni to participate in Harvard's third annual Global Month of Service this April. Last year 150 local alumni volunteered, and for 2012, in honor of Harvard's 375th Anniversary, the Club hopes to double that number.

This year's "Harvard Serves" Kick-Off event on March 21, at the architectural offices of Michael Lehrer MAR '78, attracted 120 attendees. Alumni met with representatives of 26 local non-profit organizations, each with its own alumni volunteer coordinator. Service opportunities extend throughout the greater Southern California area and encompass a wide variety of activities, ranging from animals, to homeless housing, to inner-city youth, to science for underserved communities. The list of available projects is listed on pages 5-7.



*120 participants gathered at the third annual Harvard Serves Kick-Off event.*

HAA Elected Director Liz Ryan AB '81 co-chairs the Global Month of Service for the Harvard Alumni Association, and is the Harvard Club of Southern California's Public Service Coordinator as well. Of the 40 cities who participated in this HAA initiative last year, Southern California's volunteer participation topped them all. "Whatever your skill, and wherever your neighborhood, we've got a volunteer activity for you. Come join the fun!" says Ryan.



# 2012-2013 CLUB ELECTION BALLOT

Pursuant to Article IV, Section 1 of the Club By-Laws, the Nominating Committee is pleased to present the following nominations for officers and directors of the Harvard Club of Southern California for the year 2012-2013:

Yes/No	Title	Name
/	President	<b>OFFICERS:</b> Albert Chang, MD AB '63
/	Executive VP	Marsha J. Hirano-Nakanishi EdD '81
/	VP Programs	Madeleine Mejia EdM '00
/	VP Programs	Kay L. Park, MD AB '87
/	VP Finance	William G. Glass MBA '59
/	VP Finance	Maurice C. Levin AB '78, MBA '84
/	VP Schools	Daniel A. Medina AB '79, MBA '83
/	VP Orange County	Elizabeth Gillis AB '82
/	VP Orange County	A.J. Rogers MD '79
/	VP Communications	Steven M. Arkow AB '84
/	VP Communications	Cynthia A. Torres AB '80, MBA '84
/	VP Membership	Jacki Chou AB '07
/	VP Membership	George B. Newhouse, Jr. AB '76
/	VP Radcliffe	Isabelle I. Fox AB '47
/	Secretary	Curtis C. Jang AB '87
/	Past President	Daniel A. Medina AB '79, MBA '83

Term Ending 2013		DIRECTORS:
/	Director	McDonald C. Bartels AB '09
/	Director	Ali Binazir, MD, AB '93
/	Director	Gus Frias, EdM '94
/	Director	Herbert D. Goldman MD, AB '76
/	Director	Stacie Olivares-Castain MPP '00
/	Director	Ethel L. Seminario-Laczko GSE '84

Term Ending 2014		
/	Director	Jonathan N. Baskin AB '61
/	Director	Barbara Natterson Horowitz, MD AB '83, AM '83
/	Director	Sonia E. Molina DMD '89, MPH '89
/	Director	Peggy Nguyen AB '94
/	Director	Aaron Wilson AB '03
/	Director	Danice L. Woodley AB '00, JD '05

Term Ending 2015		
/	Director	Beverlee Z. Bickmore, AB '64, MPA '74
/	Director	Priscilla Smith Heim AB '52
/	Director	E. Dryden Pence III AB '82
/	Director	Patric M. Verrone AB '81
/	Director	Kenneth S. Williams AB '78
/	Director	Hannah J. Zackson MD, AB '76

**Please send your marked ballots to the Club Secretary by April 20, 2012**

Harvard Club of Southern California  
c/o Curtis Jang  
1409 Santa Teresa  
South Pasadena, CA 91030

## HARVARD CLUB OF SOUTHERN CALIFORNIA

### OFFICERS

#### President

Daniel A. Medina, AB '79, MBA '83  
(626) 284-0498

#### Executive Vice President

Marsha Hirano-Nakanishi, EdD '81  
(562) 951-4767

#### Vice Presidents Programs

Albert Chang, MD, AB '63 • (310) 994-9974  
Peggy Nguyen, AB '94 • (310) 646-3853, x1058

#### Vice Presidents Communications

Cynthia Torres, AB '80, MBA '84 • (310) 260-1037  
Steven M. Arkow, AB '84

#### Vice President Finance/Financial Aid

William G. Glass MBA '59 • (818) 981-3238

#### Vice President Schools

Jonathan Baskin, AB '61 • (626) 449-8226

#### Vice President Orange County

A. J. Rogers, MD '79 • (949) 248-9182

#### Vice Presidents Membership

Herbert D. Goldman, MD, AB '76 • (818) 994-7098  
George B. Newhouse, AB '76 • (213) 613-9474

#### Vice President Radcliffe

Isabelle I. Fox, AB '47 • (818) 788-8796

#### Secretary

Curtis Jang, AB '87 • (626) 300-0818

#### Past President/HAA Regional Director

Kenneth S. Williams, AB '78 • (310) 471-1628

### COMMITTEE CHAIRS

#### Harvard College Recent Graduates

Ali Binazir, MD, AB '93 • (310) 396-9840

#### Asian-Americans Outreach Committee, Chair

Kay Park, MD, AB '87 • (818) 957-0923

#### Prize Book Chair

Curtis Jang, AB '87 • (626) 300-0818

#### Latino Graduates Chair

Ethel Seminario-Laczko, EdM '84  
(877) 99-Harvard

#### Nominating Committee Chair

Cynthia Torres, AB '80, MBA '84 • (310) 260-1037

### CLUB NEWSLETTER/ WEBSITE

Terry Nathan  
(310) 546-5252, email: HarvardSoCal@gmail.com

This newsletter accepts items for publication. Materials must be submitted by the 12th of the prior month to appear in the following newsletter. Please include a phone number or email address with all submissions. Email submissions to: HarvardSoCal@gmail.com



**Sunday, April 29, 2012:**

# **The 2012 Harvard Club Annual Dinner**

***Michael Lynton AB '81, MBA '87, and George J. Sanchez, Ph.D., AB '81 to be Honored***

Join us as we install our officers and honor distinguished members of our community. Our honorees this year include Michael Lynton AB '81, MBA '87, Chief Executive Officer of Sony Corporation of America, and George J. Sanchez, Ph.D., AB '81, Prof. of American Studies & Ethnicity and History at USC. Entertainment will be provided by The Yardbirds, an alumni a capella group.



**Michael Lynton AB '81, MBA '87**, Chief Executive Officer of Sony Corporation of America, will be this year's recipient of the Club's John Harvard Award for Distinguished Community Service. His responsibilities include oversight of Sony's U.S. entertainment businesses, including the movie and television studio Sony Pictures Entertainment, and Sony's music sales and publishing groups. Lynton has put a major emphasis on environmental sustainability at Sony Pictures, and opened two buildings that were recently awarded LEED certification for their exacting environmental standards.



**George J. Sanchez, Ph.D., AB '81**, Professor of American Studies and Ethnicity and History at the University of Southern California, will be this year's recipient of the Excellence in Education Award. An award-winning scholar of Chicano history and immigration who joined the College faculty in 1997, Dr. Sanchez is the former director of American Studies and Ethnicity, a program he helped build into one of the top American and Ethnic Studies Departments in the nation.



**The Harvard Yardbirds** were launched when *Pitches* co-founder Diane Nabatoff '78 and former *Callbacks* president Mia Riverton '99 decided they really missed singing in a cappella groups. Diane and Mia made a few calls to their Harvard friends who love to sing -- and now, a year later, the group has blossomed into the current 16-member ensemble. *The Yardbirds* represent a cross-section of Harvard a cappella groups spanning the 70's to the 00's: the *Pitches*, *Krokodiloes*, *Callbacks*, and *Opportunes*. The group's repertoire features arrangements ranging from American Songbook standards to contemporary songs.

### ***Club Dinner Details:***

Date: Sunday, April 29, 2012  
 Time: 6:00 p.m.  
 Place: USC Town & Gown, 665 Exposition Blvd., Los Angeles, CA 90089  
 Cost: \$75/members & guests  
       \$80/non-members (inc. \$20 discount off of Club Membership)  
       \$60/Recent Grads (Classes of '01 – '10)  
 Price includes three course dinner and parking (no refunds)  
 Register: <http://www.Harvard-LA.org>  
 Contact: Madeleine Mejia, [Madeleine\\_Mejia@post.harvard.edu](mailto:Madeleine_Mejia@post.harvard.edu)





## Six California Candidates Stand for HAA Overseer, Elected Director Posts

The Harvard Club Board of Directors has endorsed three candidates for the position of Overseer (six year term) and three candidates for Elected Director (three year term) of the Harvard Alumni Association. All of the endorsed candidates are residents of California, the highest number ever nominated and further testament to the growing importance of California alumni to Harvard.

All Harvard degree holders are encouraged to vote in the HAA's spring elections, which determine the composition of two of Harvard's important governing and alumni engagement groups. Ballots will be mailed by April 1 and must be received back in Cambridge by noon on May 18. The election results are announced at the HAA's annual meeting on the afternoon of Commencement, on May 24.

### *Endorsed Candidates for Overseer:*



**Michael M. Lynton AB '82, M.B.A. '87**, Los Angeles. Chief Executive Officer of Sony Corporation of America. Lynton has led the Sony Pictures' global operations. 2012 recipient of the Club's John Harvard Award for distinguished community service.



**William H. Rastetter, A.M. '72, Ph.D. '75**, Rancho Santa Fe. California Partner, Venrock. Author of numerous scientific publications and patents in the fields of organic chemistry, protein and enzyme engineering and biotechnology. Founder, CEO and Chairman of IDEC Pharmaceuticals.



**Kathryn A. Taylor AB '80**, San Francisco. Founder and CEO, One PacificCoast Bank. The Bank's mission is to bring beneficial banking to low-income communities in an economically and environmentally sustainable manner; profits are re-invested in the communities it serves.

### *Endorsed Candidates for Elected Director:*



**John F. Bowman AB '80, MBA '85**, Santa Monica. Executive producer, The Walt Disney Company. Emmy award-winning television writer and producer. Trustee, The Harvard Lampoon; served as chair of its Centennial Celebration. Former Vice President, Harvard Club of Southern California.



**Yvonne E. Campos, J.D. '88**, San Diego. Superior Court Judge, State of California. Former Assistant United States Attorney in the Southern District of California. Active in the Harvard Law School Assn, and since 2006 has served as a visiting instructor for the HLS Trial Advocacy Workshop.



**Michael T. Kerr AB '81, MBA '85**, Canyon Country, California. Portfolio counselor and senior vice president, Capital Research Company. Co-Chair of the Harvard College Fund's Executive Committee on Financial Aid, and Co-Chair of the Harvard College Fund's West Coast Council.



# April 2012 is Harvard's Global Month of Service — Get Involved! — Volunteer Opportunities

Whatever your skill, and wherever your neighborhood, we've got a volunteer activity for you. **Register now** at <http://www.harvard-la.org/article.html?aid=349>. Each listing below includes a description of volunteer activities available, along with a date/time (if available), and person to contact. If you have any difficulty please contact the Community Service Committee Chair, Liz Ryan at 310-822-6042 or [lryan.ryanworks@gmail.com](mailto:lryan.ryanworks@gmail.com).



### 826LA: West (Venice) and East (Echo Park) — ([www.826la.org](http://www.826la.org))

When: After-school tutoring, M-Th, 2:30 PM - 5:30 PM

Contact: Warren Shaeffer, 617-899-1013 or [warren.shaeffer@gmail.com](mailto:warren.shaeffer@gmail.com)

*Drop-in tutoring, after-school workshops, in-school tutoring, support students ages 6 to 18 with their creative and expository writing skills. Hours and dates depend on activity.*



### Aid Still Required (<http://aidstillrequired.org/>)

When: Dates per consultation of volunteers and coordinator

Contact: Gerilyn Berg, 310-399-2178 or [ger1028@aol.com](mailto:ger1028@aol.com)

*Renew attention to issues after they have left the headlines, including Haiti, Indonesia (since the 2004 Tsunami), Darfur, and New Orleans. Need help with writing proposals and community outreach.*



### Anaheim Ballet (<http://www.anaheimballet.org/>)

When: Volunteer's choice of Sunday, 1 PM - 4 PM, maximum 5 volunteers

Contact: Lawrence and Sarma Rosenberg, 714-490-6150

*Volunteers are needed to advise on the marketing and business plan for the annual Anaheim International Dance Festival.*



### Autism Partnership Family Foundation (<http://www.autismpartnership.com/>)

When: April 26 and 27, 7:15 - 9:15 AM

Contact: Michael Eastman, 562-230-1117 or [michaeleastman2010@gmail.com](mailto:michaeleastman2010@gmail.com)

*Complimentary workshop for parents, teachers and professionals on "Teaching Social Skills That Change Lives." Expecting 12,000 participants. Need assistance at registration table.*



### Boys and Girls Club of Santa Monica (<http://www.smbgc.org/>)

When: School days, 2 PM - 7 PM, extended hours for teens.

Contact: Carolyne Guss, 917-538-1898, [clguss@gmail.com](mailto:clguss@gmail.com)

*We offer endless opportunities for volunteer groups to get involved and interact with our youth. (i.e. homework help, engaging in arts & crafts projects, and leading fun activities including carnivals and field day events).*



### Cabrillo High School Mentorship Program (<http://lbcabrillo.schoolloop.com/>)

When: Last Thursday of each month, 3 PM - 4 PM.

Contact: Ethel Laczko, 626-429-3138 or [etheledu@yahoo.com](mailto:etheledu@yahoo.com)

*Volunteers will speak to students about their high school experiences in the hope that students will want to apply to college.*

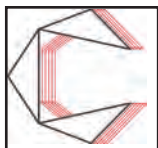


### Camp del Corazon (<http://www.campdelcorazon.org/>)

When: Saturday, April 21 (4-7 PM or 8-11 PM). Friday, April 27, 2012, 9 AM - 5 PM or 4-10 PM.

Contact: Christina Hsu, 310-210-6439, [christina.hsu@post.harvard.edu](mailto:christina.hsu@post.harvard.edu)

*Volunteers to assist with either the annual gala fundraiser on April 21 in Hollywood or the annual golf tournament on April 27 in Temecula. Volunteers are also needed for the camp's summer programs; there are three five-day sessions in August.*



### Cardborigami (<http://www.cardborigami.org/>)

When: Saturdays, 4/14, 4/21 and/or 4/28. 2 PM - 4 PM

Contact: Nancy Hammerman, (818) 259-0588 or [nancy@nhammerman.com](mailto:nancy@nhammerman.com)

*Cardborigami is a unique temporary shelter made of cardboard, distributed through an award-winning young non-profit organization that is at the advanced concept stage and has already garnered interest worldwide.*

*continued on next page*

*Harvard Serves Volunteer Opportunities, continued from previous page*



**Catholic Big Brothers Big Sisters, Los Angeles County (<http://www.catholicbigbrothers.org/>)**

When: Saturday April 21, 10 AM - 2 PM

Contact: Mark Kelsey, 310.390-1000, x241 or [mk@kelsey.com](mailto:mk@kelsey.com)

*Helping youth of all beliefs and backgrounds throughout Los Angeles County reach their potential through one-to-one, relationship based mentoring. Our vision is to create a lasting, positive impact on youth.*



**Collective Voices Foundation (<http://collectivevoices.org/>)**

When: Throughout April, by consultation with volunteers

Contact: Amanda Keidan, 310 392 9514 or [Amanda.keidan@gmail.com](mailto:Amanda.keidan@gmail.com)

*Resource choreographers that match professionals and community partners to education sites to create collaborative learning experiences for youth across a wide range of projects.*



**Community Lawyers Inc. (<http://www.community-lawyers.org/>)**

When: Saturday, April 28, 10 AM - 3 PM or later

Contact: Eva Plaza, at 213-503-7916 and 310-478-6611 or [Evisland@aol.com](mailto:Evisland@aol.com)

*The organization advocates for and provides free legal services to Compton and the surrounding communities. Volunteers to help us reorganize a more "open" environment to accommodate more clients*



**Global Education, Peru ([www.gloaled.us](http://www.gloaled.us))**

When: Dates per consultation of volunteers and coordinator

Contact: Ethel Seminario-Laczko at 626-429-3138 or [etheledu@yahoo.com](mailto:etheledu@yahoo.com)

*Write fundraising proposals, develop website, develop curricula, solicit book donations to establish children's libraries, California incorporation.*



**Harvard Tutors in the Schools (<http://www.service.clubsandsigs.harvard.edu/article.html?aid=295>)**

When: One hour or more/week during school year. Time of day TBD.

Contact: Priscilla Heim at 310-472-4478 or [priheim@verizon.net](mailto:priheim@verizon.net)

*Tutoring children K - 12 in all subjects. A knowledge of your subject and an understanding of children is helpful.*



**Haven Hills ([www.havenhills.org/](http://www.havenhills.org/))**

When: Dates per consultation of volunteers and coordinator

Contact: Ivy Panlilio at 818-887-7481 x12 (work) or 213-880-9925 (cell) or [ipanlilio@havenhills.org](mailto:ipanlilio@havenhills.org)

*Provides safety and support to indigent victims of domestic violence while working to break the cycle of abuse. Volunteers can help victims enormously who are struggling to get back on their feet, by donating emergency food and household items.*



**Homeless Healthcare Los Angeles (<http://www.hhcla.org/>)**

When: Thursday, April 26th, from 10 AM - 2 PM

Contact: Michael Lehrer at 323-664-4747 or [Michael@lehrerarchitects.com](mailto:Michael@lehrerarchitects.com)

*Volunteers will be working at our Skid Row needle exchange / harm reduction site distributing food and hygiene items to homeless participants, and will assist in the daily art yoga/social activities planned for the day.*



**Inside Out Community Arts (<http://www.insideoutca.org/>)**

When: Saturday, April 14, 11 AM - 4 PM, maximum 12 volunteers

Contact: Alison Forbes, 310-397-8820, [alforbes@insideoutca.org](mailto:alforbes@insideoutca.org)

*Volunteers are needed to help build, paint and prepare flats that will become sets for the students' final performance.*



**Lange Foundation (<http://www.langefoundation.com/>)**

When: April 21, 2012, 10:00 AM - 3:00 PM

Contact: Alex De La Riva-Konecni, 617.710.3977 or [alex.delariva.konecni@gmail.com](mailto:alex.delariva.konecni@gmail.com)

*Lange Foundation is dedicated to saving impounded companion animals, and preparing them for a journey to a new, safe, loving world. Volunteers are crucial to our organization.*



**Los Angeles Leadership Academy (<http://www.laleadership.org/>)**

When: Saturday, April 21, 9:30 AM - 4 PM

Contact: Roger Lowenstein, 213-381-8484 or [rlowenstein@laleadership.org](mailto:rlowenstein@laleadership.org)

*L.A. Leadership is a public charter school in Lincoln Heights, serving some of the poorest families in California.*

*Volunteers are needed to help paint and touch up, and work in the school garden.*



**Los Angeles Maritime Institute TopSail Youth Program (<http://www.lamitopsail.org/>)**

When: April 21: Mandatory orientation meeting. April 28: First sail training day. Maximum 10 volunteers.

Contact: Chris Richard, 310-929-7223 or [chris@chrisrichard.org](mailto:chris@chrisrichard.org)

*Learn the skills needed to operate LAMI's fleet of tall ships and deliver the TopSail Youth Program message to underprivileged kids in our community.*



**Mayor's Day of Service (<http://www.service.clubsandsigs.harvard.edu/article.html?aid=284>)**

When: Saturday, March 31st, 8 AM - 2 PM, or in chunks

Contact: Jennie Carey, 602-721-3820, [jcarey@laep.org](mailto:jcarey@laep.org)

*On this day of service the community will share resources and enjoy fun activities for youth and families around how to reduce hunger, improve public health, increase equal access to healthy food in our communities, educate, and encourage environmental responsibility.*



**Minds Matter of Los Angeles ([www.mindsmatter.org/](http://www.mindsmatter.org/))**

When: Volunteer's choice of Saturdays, during the school year

Contact: Leanne Huebner at 310-721-6228 or [lpyott@yahoo.com](mailto:lpyott@yahoo.com)

*Minds Matter is a transformative program assisting academically achieving low-income youth broaden their dreams through mentoring, summer college academic experiences, and school-year Saturday curriculum. Our ongoing volunteer needs are highly dependent on a volunteer's time, talent and areas of interest.*



**The MUSES, California Science Center (<http://www.californiasciencecenter.org/>)**

When: Monday, April 30, 8 AM - 6 PM, in 3-4 hour shifts. and Tuesday, May 1, 6:30 AM - 7 PM, in 3-4 hour shifts

Contact: Kevin Wegener, 210-269-9483 or [kwegener@mba2008.hbs.edu](mailto:kwegener@mba2008.hbs.edu)

*We promote and support programs for youth at the California Science Center focusing on three areas: Community Youth Programs, the California Science Fair, and Hands-On Science Camp.*



**The Muzeo of Anaheim (<http://www.muzeo.org/>)**

When: based on volunteer availability

Contact: Andy Plisko, 714-225-7496 or [ajpliskomd@yahoo.com](mailto:ajpliskomd@yahoo.com)

*The Muzeo is a new 25,000 s.f. complex in the heart of Anaheim that hosts 3 national and international traveling art exhibits each year. Volunteers are needed to advise on our marketing plan, with some marketing expertise/knowledge in the arts and in non-profit organizations optimal.*



**RK Squared (<http://www.service.clubsandsigs.harvard.edu/article.html?aid=283>)**

When: based on volunteer availability

Contact: Ramona Davenport Rogers, 805-588-2555 or [ramonarogers@prucalcc.com](mailto:ramonarogers@prucalcc.com)

*Founded in 1996, the organization has collected and distributed thousands of new and gently used books among underprivileged children. Books are needed for donation to a SoCal shelter to establish a library, give the children some books of their own, and encourage staff to institute a story time to promote literacy. Also seeking a volunteer to coordinate ongoing interface between the shelter and collections.*



**Santa Cecilia Orchestra (<http://www.scorchestra.org/>)**

When: Sunday, April 29, 3 PM - 5:30 PM

Contact: Leanne Huebner, 323-259-3011, [lpyott@yahoo.com](mailto:lpyott@yahoo.com)

*SCO shares the beauty of classical music with Southern California audiences, with special focus on underserved Latino communities. Its "Discovering Music" program provides free music education and lessons in elementary schools.*



**School on Wheels (<http://www.schoolonwheels.org/>)**

When: Saturday, April 14, 9:30 AM - approx. 12 PM

Contact: Evan Vittor, 646-696-1982 or [vittor@gmail.com](mailto:vittor@gmail.com)

*The mission of School on Wheels is to enhance educational opportunities for homeless children from kindergarten through twelfth grade. For our Career Day/College Seminar we need volunteers to discuss their careers and the importance of higher education.*

## Upcoming LGBT Events by Ivy Pride Alliance LA



### April 1, 2012 - "The Color Purple" and Post Theatre Cocktail Party

Enjoy the Tony Award-winning Broadway musical at the Celebration Theatre. Post-theatre party at the Formosa Cafe. For additional information write [cfaber@lagaycenter.org](mailto:cfaber@lagaycenter.org)



### April 18, 2012 - Wine Tasting at Silver Lake Wine

Experience a special wine tasting at one of the most respected shops in LA. For additional information write [kassover@alumni.upenn.edu](mailto:kassover@alumni.upenn.edu)

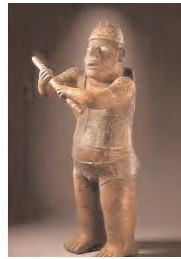
*More details for both of these events can be found on our club website, [www.Harvard-LA.org](http://www.Harvard-LA.org).*



## Sir Neville Marriner and The Colburn Orchestra at Disney Concert Hall

Come hear world renowned **Maestro Sir Neville Marriner** conduct the Colburn School Orchestra performing the William Tell Overture, The Samuel Barber Violin Concerto, and the Enigma Variations. The Colburn Orchestra marks the centenary of Richard D. Colburn with a special concert at Walt Disney Concert Hall, at which his closest artistic friend, Sir Neville Marriner, will be honored.

**Date:** Sunday, April 22, 2011  
**Time:** 6:30 P.M.  
**Location:** Walt Disney Concert Hall (Los Angeles)  
**Cost:** \$35 members, \$40 non-members  
**Contact:** Albert Chang, [AlbertChang@charter.net](mailto:AlbertChang@charter.net)  
**Register:** <http://www.Harvard-LA.org>



## Docent-Led Tour of the East Asian Art Galleries at LACMA

Join us for this special visit and docent-led tour of the East Asian Art Galleries, led by Christina Yu, a graduate of Wellesley, who is the newly appointed Assistant Curator for Chinese and Korean Art at LACMA. Optional group lunch.

This event is co-sponsored by the HCSC and the Wellesley Alumni Association. Meet at the Spaulding Street entrance ticket office. Deadline to register is Thursday, April 5th.

**Date:** Saturday, April 7, 2012  
**Time:** 11:00 A.M.  
**Location:** Los Angeles County Museum of Art  
**Cost:** \$15 members, \$20 non-members  
**Contact:** Thuy Le, 310-591-4384 or Grace Jeon, 626-862-0538



## Fifth Annual Radcliffe College Alumnae Luncheon

The Harvard Club of Southern California welcomes you to the fifth annual Radcliffe Alumnae Luncheon. Let's eat, share memories, catch up, and enjoy a relaxing afternoon together.

**Date:** Saturday, April 28, 2012  
**Time:** 12:00 noon  
**Location:** The home of Isabelle Fox '47  
 3929 Stansbury Ave.  
 Sherman Oaks, CA  
**Cost:** \$30 per person  
**RSVP:** Isabelle Fox, 818-788-8796  
**Register:** <http://www.Harvard-LA.org>  
 or send a check payable to HCSC to Isabelle Fox at 3929 Stansbury Ave, Sherman Oaks, CA 91423



## Exclusive Skirball Exhibition: "Women Hold Up Half the Sky"

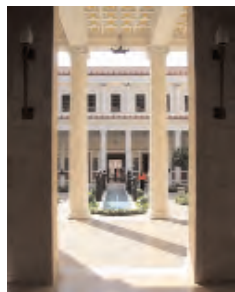


**Date:** Saturday, April 28, 2012  
**Time:** 1:30 P.M. (optional group lunch at Noon)  
**Location:** Skirball Cultural Center, 2701 North Sepulveda Blvd.,  
Los Angeles, CA 90049  
**Cost:** Docent Tour, \$7; Optional Group Lunch, \$23  
**Contact:** Albert Chang, AlbertChang@charter.net  
**Register:** <http://www.Harvard-LA.org>

Please join us for the inspiring exhibition "Women Hold Up Half the Sky" based on the best-selling book by Harvard Overseer Nicholas D. Kristof AB '82 and his wife Sheryl WuDunn MBA '87.

Featuring documentary photographs, visual art, sound installations, and interactive opportunities for visitors to get involved, Women Hold Up Half the Sky is a wake-up call to the injustices perpetrated against women worldwide and the ways we can effect change.

Experience these tales of perseverance, courage, and hope—and celebrate how individuals can be part of workable solutions.



## Visit Our Neighborhood: Malibu

Visit and experience an ecological wetland project, wine tasting at Rosenthal Winery, and the Getty Villa.

The group will meet at the Malibu Civic Center parking lot. Instructions will follow after registration. Limit of two tickets per person on a first come, first served basis. Ticket cost includes a picnic lunch.

**Date:** Saturday, May 5, 2012  
**Time:** 10:00 A.M. - 4:00 P.M.  
**Place:** Malibu Civic Center  
**Cost:** \$35 members, \$40 non-members  
**Contact:** John Huang MD MPH,  
[johncalebhuang@gmail.com](mailto:johncalebhuang@gmail.com)  
**Register:** <http://www.Harvard-LA.org>



## 3rd Annual Workshop: Keys to a Winning MBA Application with Alex Leventhal MBA '98

**Date:** Tuesday, May 15, 2012  
**Time:** 7:00 P.M.  
**Location:** TBA  
**Cost:** \$10, Members; \$15 Non-members  
**Contact:** Alex Leventhal, [alex@prepmba.com](mailto:alex@prepmba.com)  
**Register:** <http://www.Harvard-LA.org>

Are you considering applying to business schools? The competition for a spot at one of the top MBA programs is intense. With GMAT scores and GPAs coming in a tight band, the essays and interviews are where candidates distinguish themselves. Learn from an experienced admissions consultant what it takes to set your application apart.



## The Radcliffe Pitches in LA

Come join **The Radcliffe Pitches** for a night of jazz a cappella as they start off on their biannual summer tour! The group, composed of 12 undergraduate women, is the oldest all-female a cappella group at Harvard, founded in 1975 at the historic Hasty Pudding Club. The Pitches are well known for their sophisticated musicality and timeless repertoire inspired by artists like Ella Fitzgerald and Frank Sinatra. As an added attraction, **The Harvard Yardbirds** will open the show.

**Date:** Tuesday, May 29, 2012  
**Time:** 6:30 P.M.  
**Place:** Westwood Presbyterian Church  
**Cost:** \$15 in advance, \$20 at the door  
**Contact:** Ken Williams,  
kenneth\_s\_williams@hotmail.com  
**Register:** <http://www.Harvard-LA.org>

## 2012 Pageant of the Masters: *Where Art Comes to Life* July 14, 2012



**Date:** Saturday, July 14, 2012  
**Time:** 8:30 P.M.  
**Place:** Festival of Arts, Laguna Beach, CA  
**Cost:** \$90 (Main Tier Center);  
\$50 (Director's Tier Center)  
**Contact:** Ryan Probasco, [rprobasco7@gmail.com](mailto:rprobasco7@gmail.com)

Please join us for our annual trip to see the beautiful and memorable Pageant of the Masters in Laguna Beach. We have fantastic seats in the center section this year - sign up early, as these seats will sell out quickly.

## Bolshoi Ballet's "Swan Lake"



Join us for the performance of the classic "Swan Lake" by the legendary Bolshoi Ballet Company at the Dorothy Chandler Pavilion's Music Center. We have a limited number of discounted tickets in the Founders Circle section. Limit of 2 tickets per purchase. First come, first served. There will be an optional pre-event dinner at Kendall's Brasserie at 6 PM.

**Date:** Saturday, June 9, 2012  
**Time:** 7:30 P.M.  
**Location:** Music Center, Los Angeles, CA  
**Cost:** \$75.00 members, \$80 non-members  
**Contact:** Albert Chang, [AlbertChang@charter.net](mailto:AlbertChang@charter.net)  
**Register:** <http://www.Harvard-LA.org>

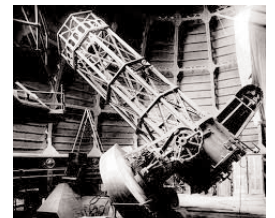
## 5 Month Countdown...



## A Night at the Mt. Wilson Observatory

**Date:** Saturday, August 11, 2012  
**Time:** 4:00 P.M. - Midnight  
**Location:** Mt Wilson Observatory - Pasadena, CA  
**Cost :** \$80, members; \$85, non-members  
(includes a box dinner)  
**Contact:** Albert Chang, [AlbertChang@charter.net](mailto:AlbertChang@charter.net)

Join us for an unforgettable evening exploring the Universe through the famous telescopes used by Einstein and Hubble. Professor Edo Berger from Harvard will guide us in the exploration. Factoid: Ganymede is the largest of 93 moons around Jupiter, and is larger than Mercury and Pluto.



# *The Harvard Club of Southern California*

## *Membership Registration Form*

**Stay involved with the local Harvard community:**

Southern California residents who have been connected for at least one academic year with any department of Harvard University as a student or instructor are eligible for membership in the Harvard Club of Southern California. Member benefits include a monthly newsletter, reduced fees for Club events, electronic updates, and inclusion in the annual directory. Reciprocal benefits with other Ivy League clubs are also available, as determined by each respective organization.

**For your added convenience, you are welcome to renew on-line on our website: [www.harvard-la.org](http://www.harvard-la.org)**

**Please fill out and return to:**

**The Harvard Club of Southern California  
c/o Membership Vice President  
1020 Manhattan Beach Blvd., Suite 204  
Manhattan Beach, CA 90266**

**PLEASE PRINT OR TYPE CAREFULLY FOR DIRECTORY USE**

Make checks payable to Harvard Club of Southern California

First Name: \_\_\_\_\_ Last Name: \_\_\_\_\_ H-R Class & Degree: \_\_\_\_\_

Spouse's Name: \_\_\_\_\_

Occupation: \_\_\_\_\_ Gender (circle): Male Female Mail Location (circle): Home Work

Home Address: \_\_\_\_\_ City: \_\_\_\_\_ State: \_\_\_\_\_ Zip Code: \_\_\_\_\_

Home Phone: \_\_\_\_\_ Home Fax: \_\_\_\_\_

Work Address: \_\_\_\_\_ City: \_\_\_\_\_ State: \_\_\_\_\_ Zip Code: \_\_\_\_\_

Work Phone: \_\_\_\_\_ Work Fax: \_\_\_\_\_

Email Address: \_\_\_\_\_

**Membership**

(check one)

- |                          |  |               |
|--------------------------|--|---------------|
| <input type="checkbox"/> | Regular (12 months)  | \$ 55         |
| <input type="checkbox"/> | Sponsor  | \$ 100        |
| <input type="checkbox"/> | Three-Year (36 months)   | \$ 135        |
| <input type="checkbox"/> | Lifetime Membership  | \$1,000       |
| <input type="checkbox"/> | Second Graduate in same household  | \$ 25         |
| <input type="checkbox"/> | Recent Graduate (Classes of 2008-2010)                                     | \$ 20         |
| <input type="checkbox"/> | Complimentary (Undergrad & Class of 2011)                                  | N/C           |
| <input type="checkbox"/> | Special <input type="checkbox"/> Parent <input type="checkbox"/> Widow(er) | \$ 50         |
| <input type="checkbox"/> | Joint Membership with Harvardwood  | \$ 20         |
| <input type="checkbox"/> | Joint Membership with Harvard Business School Assn (SoCal)                 | \$ 20         |
| <input type="checkbox"/> | Joint Membership with Harvard Business School Assn (OC)                    | \$ 20         |
| <input type="checkbox"/> | Prize Book Sponsorship(s)  | \$ 37.50 each |
| <input type="checkbox"/> | Scholarship Donation   | \$ _____      |

**Additional**

**TOTAL AMOUNT DUE** \$ \_\_\_\_\_

***Credit Card payments are accepted on our website, <http://www.Harvard-LA.org>. Joint membership discounts are for new members only: if you are now, or previously were, a member of any of our sister clubs this offer does not apply.***

**Involvement Interest:**

- Membership  Interviewing Applicants  
 Latino  Asian-American  African-American  
 Programs  Recent Grad

**Program Preferences:**

- Lectures  Networking  Wine Tastings  
 Art/Music  Book Club  Family  
 Behind the Scene  Mixers  Dances  
 Outdoors  Community Service



c/o Membership VP  
 1020 Manhattan Beach Blvd, Suite 204  
 Manhattan Beach, CA 90266

**RETURN SERVICE REQUESTED**

**THE HARVARD CLUB ANNUAL  
 DINNER AND AWARDS  
 ~ APRIL 29, 2012 ~**

FOR MORE INFORMATION ON EVENTS AND GENERAL CLUB NEWS, VISIT THE CLUB WEB SITE AT

[www.harvard-la.org](http://www.harvard-la.org)

# CALENDAR OF UPCOMING EVENTS

To recommend an event or volunteer for one, contact one of our Programs VPs. Contact information can be found on page 2.

\*All checks for events are non-refundable unless explicitly stated otherwise. Unless specifically noted, RSVPs are not confirmed.

DATE/TIME	EVENT	LOCATION	COST*	CONTACT
April 1, Sunday 3:00 P.M.	LGBT Performance of "The Color Purple"	Celebration Theatre Los Angeles, CA	\$32 per person	Cameron Faber, cfaber@lagaycenter.org
April 7, Saturday 11:00 A.M.	Docent-Led Tour of East Asian Art Galleries	LACMA Los Angeles, CA	\$15, members \$20, non-members	Thuy Le, 310-591-4384 or Grace Jeon, 626-862-0538
April 18, Wed. 7:00 P.M.	LGBT Wine Tasting at Silverlake Wine	Silverlake Wine Los Angeles, CA	\$25 per person	Kevin Kassover, kassover@alumni.upenn.edu
April 22, Sunday 6:30 P.M.	Sir Neville Marriner and The Colburn Orchestra	Walt Disney Concert Hall Los Angeles, CA	\$35, members \$40, non-members	Albert Chang, MD, AlbertChang@charter.net
April 28, Saturday 12:00 Noon	Fifth Annual Radcliffe College Alumnae Luncheon	The home of Isabelle Fox Sherman Oaks, CA	\$30 per person	Isabelle Fox, foxbethere@aol.com
April 28, Saturday 1:30 P.M.	Exclusive Skirball Exhibition: "Women Hold Up Half...Sky"	Skirball Cultural Center Los Angeles, CA	\$7, docent tour \$23, optional lunch	Albert Chang, MD, AlbertChang@charter.net
April 29, Sunday 6:00 P.M.	Harvard Club Annual Dinner and Awards	USC Town & Gown Los Angeles, CA	\$75, members/guests \$80, non-members \$60, recent grads	Madeleine Mejia, Madeleine_Mejia@post.harvard.edu
May 5, Saturday 10:00 A.M.	Visit Our Neighborhood: Malibu	Malibu Civic Center Malibu, CA	\$35, members \$40, non-members	John Huang, MD, jchuang@mednet.ucla.edu
May 15, Tuesday 7:00 P.M.	Keys to a Winning MBA Application w/Alex Leventhal	Location TBA	\$10, members \$15, non-members	Alex Leventhal, alex@prepmba.com